



Follow the conversation:



@ORFC #ORFC20

Colin Tudge

Founder, ORFC

Leah Penniman

Soul Fire Farm

John Meadley

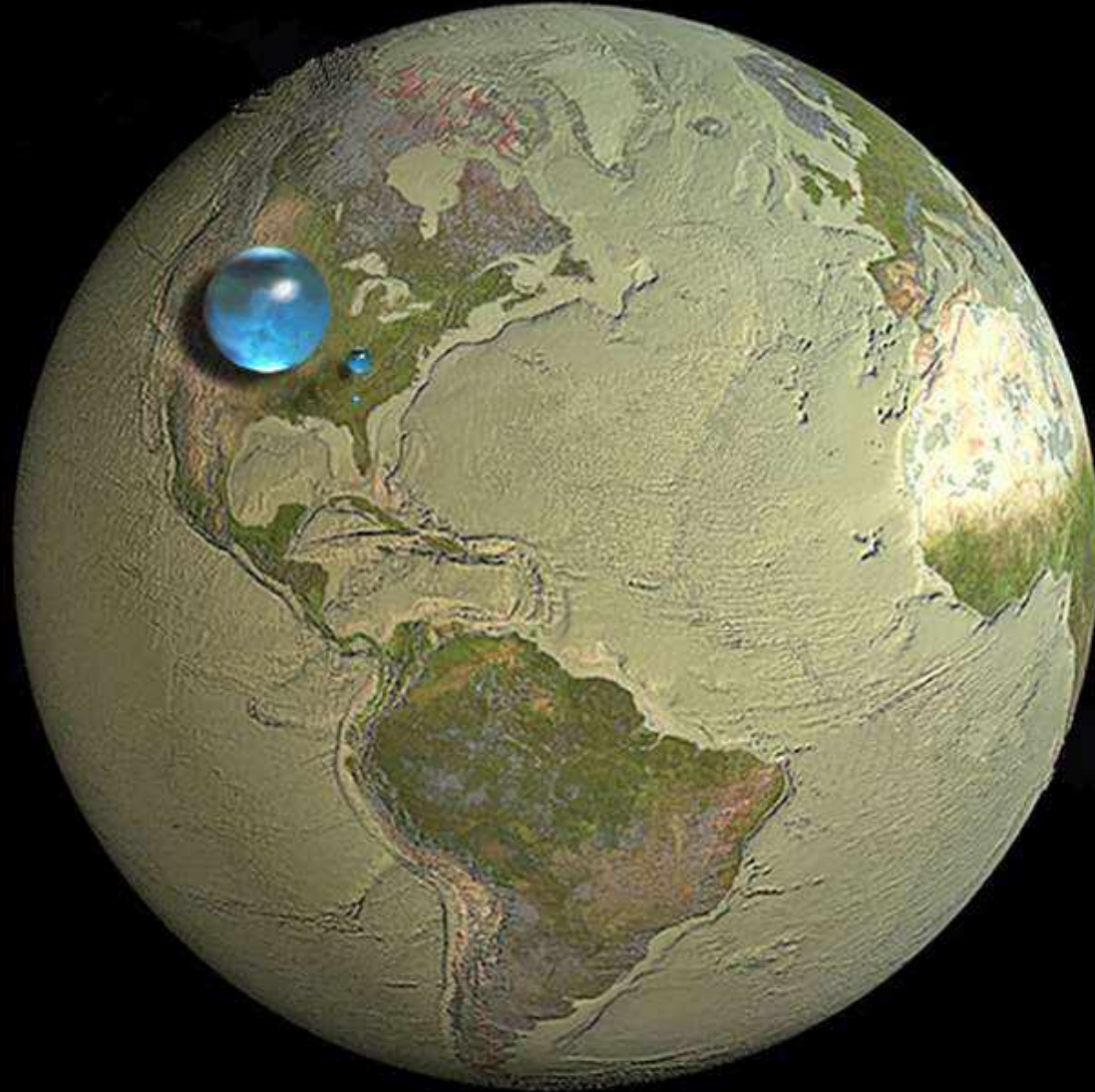
Pasture-Fed Livestock Association

❖ But we know very little about what would happen to the soil if no livestock ever steps back on it — forever



With thanks for grazed pasture -

The World's Water



In 2003, Adam Nieman et al created an image of the world's water as a sphere sitting next to the earth rather than spread over its surface.

The large sphere is the total amount of water on the planet.

The smaller sphere is the total amount of fresh water.

The smallest sphere, barely distinguishable, is the total amount of fresh water that we can access in lakes and rivers



All water on, in, and above the Earth



Liquid fresh water



Fresh-water lakes and rivers

Howard Perlman, USGS,
Jack Cook, Woods Hole Oceanographic Institution,
Adam Nieman
Data source: Igor Shiklomanov
<http://ga.water.usgs.gov/edu/earthhowmuch.html>

The world's top soil



Harper Adams
University

Dr. Simon Jeffery

...in a sphere just 25 km
in diameter!



4.2 billion hectares to a depth of 20cm



The pastures of Mongolia

The Maasai in East Africa





Grazing cattle in Argentina



Grazing sheep in Romania

Around one third of all the world's large ruminants are in India



75 million dairy farmers





Milk Vending machine in shopping mall in central Delhi



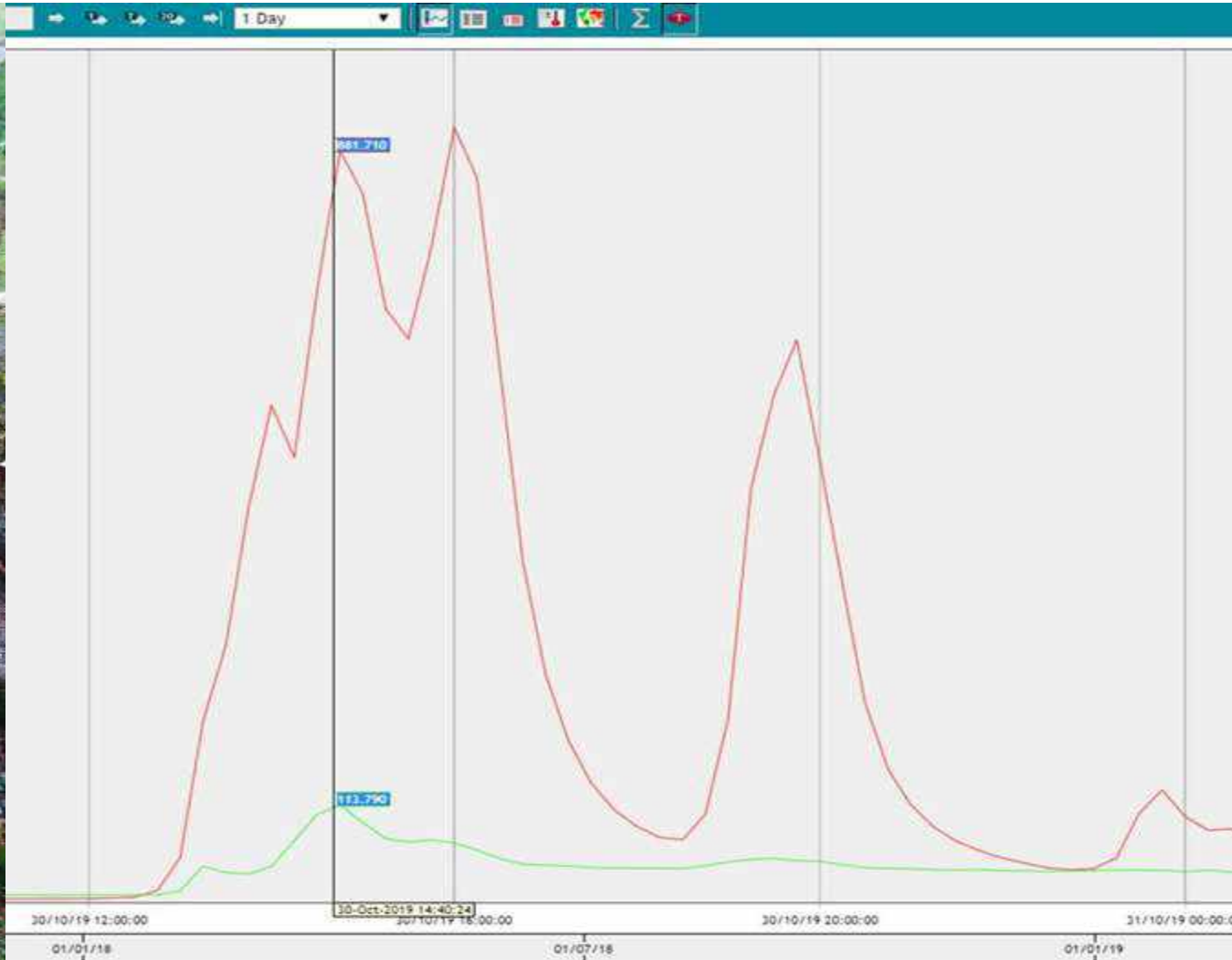




Soil loss from arable versus grassland soil North Wyke Farm Platform (systems based experiment)



ROTHAMSTED
RESEARCH



Biotechnology and
Biological Sciences
Research Council





Heritage wheat planted directly into permanent pasture



The farm at Naroques – southern France

The farm's mowing machines







Hill Top Farm, Malham
@hilltopfarmgirl

Farming is a conversation with nature

A conversation is two-sided – always to a degree mysterious; it requires faith. (Wendell Berry)



Alice Cunningham
Shumei International

Jyoti Fernandes

Landworker's Alliance