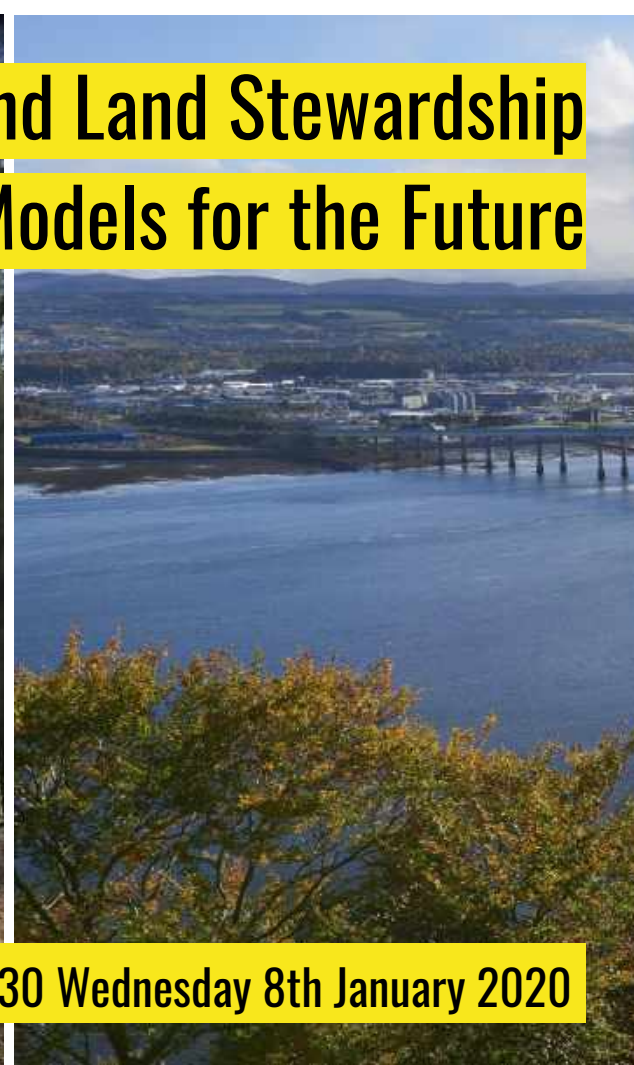


Transforming Landownership and Land Stewardship Models for the Future

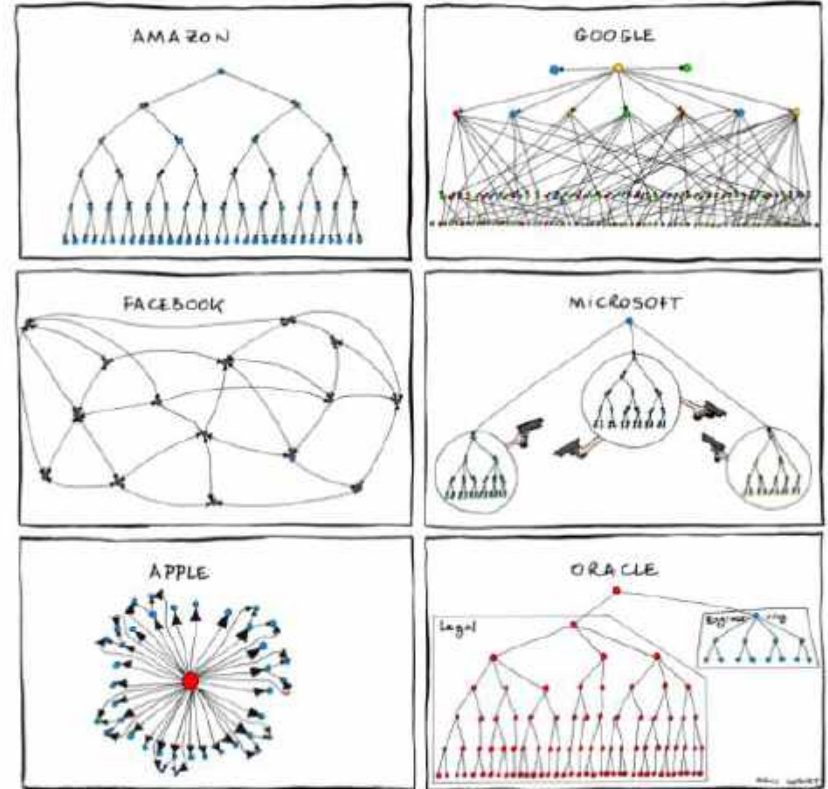


14.30 - 15.30 Wednesday 8th January 2020

Welcome

#ORFC20

#BeyondStewardship



Storytellers

Megan MacInnes

Scottish Land Commission

Ninian Stuart

Falkland Estate, Fife, Scotland

Miriam Rose

Hardwick Estate, South Oxfordshire

Corin Stuart

Windyridge Estate, East Sussex

Gemma Adams

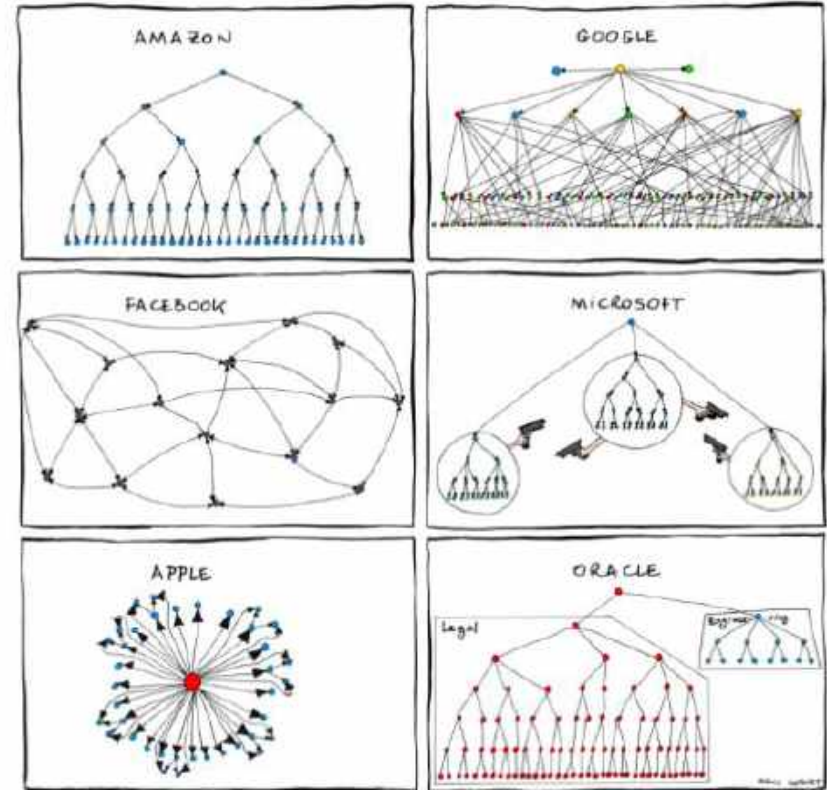
Independent Consultant, Facilitator

Questions

How might we enable equitable and responsible stewardship of land that tends to the future?

How is responsibility for land being shared via participatory governance and ownership models?

Is a modern-day 'commons' a desirable proposition? Is it possible?



Megan MacInnes

Scottish Land Commission

>> Three opportunities to govern land differently in the 2020's



Scottish Land Commission: a public body to “drive land reform forward”

Established in 2016

Land reform is ongoing - as relevant in urban areas as it is in rural ones

Changing behaviour and culture on ground, as much as statutory reforms

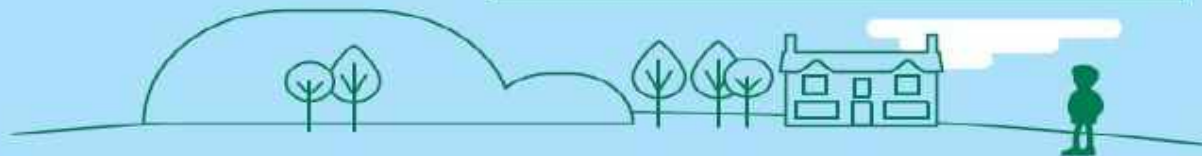
Learning from international experience

LAND INEQUALITY

has a negative effect on economic growth



CONCENTRATED OWNERSHIP



creates imbalances of social and economic and decision making power

DIVERSIFIED OWNERSHIP

and inclusive decision making

Increases productivity, reduces inequalities and creates a fair and prosperous Scotland



INCREASED ECONOMIC GROWTH




Creating a Scotland where economic growth benefits everyone and everyone has the opportunity to contribute to that growth

SUSTAINABLE & INCLUSIVE GROWTH

#landandeconomy

>> Moving from 'Ownership' towards 'Participatory Governance'

Ninian Stuart
Falkland Estate



Circa 4000 acres

Hunting lodge of Royal Stuart Monarchs; early Pictish settlement

Current owners (Stuart family) keen to open-out ownership

Centre for Stewardship established in 2006





Discussion

Megan MacInnes, Scottish Land Commission

Contact details | megan.macinnnes@landcommission.gov.scot

Ninian Stuart, Falkland Estate, Fife, Scotland

Contact details | ninian@centreforstewardship.org.uk

Miriam Rose

Hardwick Estate

>> 'Get on my land'!

The challenges of sharing responsibility and land in practice



900 acres in the Chiltern Hills

250 acre farm

430 acres mixed forestry

Community of 25 rented houses

Hemp processing, forest school, market gardens, renewable energy





>> How much change is 'good enough'?

Corin Stuart
Windyridge Estate



180 acres lowland heath Local Nature Reserve, Ashdown Forest -
European Special Protection Area and SSSI

60 acres pasture; 160 acres ancient woodland, commercial forestry

Nightjars, Dartford Warblers, Silver-studded blue butterflies

Two local families renting cottages, large communal house



How can we open-up new possibilities and make them happen?

Discussion

Miriam Rose

Hardwick Estate, South Oxfordshire

Contact details | www.hardwickestate.co.uk

Corin Stuart

Windyridge Estate, East Sussex

Contact details | corinstuart@googlemail.com

Questions

How might we enable equitable and responsible stewardship of land that tends to the future?

How is responsibility for land being shared via participatory governance and ownership models?

Is a modern-day 'commons' a desirable proposition? Is it possible?

#ORFC20

#BeyondStewardship

@GemmaAdams3

@macinnes_megan

@falklandestate

Thank you

Want to continue the conversation?
Please get in touch.