

THINK BIG ACT WILD

The Rewilding Network

Britain's first learning and action network for landowners/land managers to put rewilding into practice

**REWILDING
BRITAIN**



Image: Highland cow — Peter Cairns/scotlandbigpicture.com

What is Rewilding?



Rewilding Britain's vision is to see:

- At least **5%** of Britain in **core** rewilding
- At least **25%** of Britain returned to broader mosaics of **nature-friendly farming**— including farming, forestry and fishing.

We see this expansion reversing biodiversity loss and enabling nature to bounce back, helping us all to adapt to climate change as our complex ecosystems find their own answers.

By protecting, restoring and regenerating species-rich mosaics of habitats, rewilding helps reverse biodiversity loss and bring back the abundance of Britain's wildlife.



ONE STEP WILDER – HOLISTIC APPROACHES



Rewilding and nature friendly farming including permaculture, regenerative agriculture, and agroforestry can all contribute to nature's recovery. A diversity of approaches within a landscape are key to creating habitat mosaics that support a buzz of wildlife abundance, especially where nature friendly farming are combined with rewilding areas. Rewilding is most suitable within marginal land of low productivity – these are the areas where rewilding thrives and can create a whole range of high quality opportunities for wildlife.

Rewilding itself can also be undertaken at a range of scales and along a rewilding spectrum. From small scale marginal land, to larger scale landscape initiatives – we encourage landowners to consider a strategy where they can go one step wilder, and incorporate these areas into their land.

We provide tools and guides providing practical advice around different rewilding approaches, funding and finance considerations, legislations, and experience and stories from other people who are approaching rewilding in a diversity of ways throughout Britain.

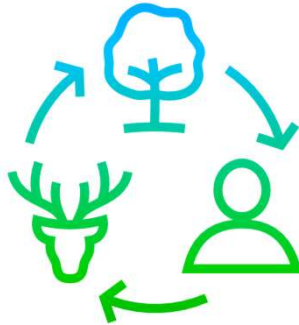


Rewilding Britain site visit – discussing options with landowners. Image: Alastair Driver

THE FIVE PRINCIPLES OF REWILDING



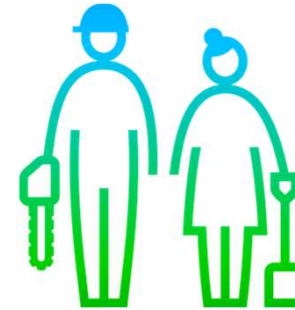
Support people and nature together



Work at nature's scale



Let nature lead



Create resilient nature-based economies



Secure benefits for the long term

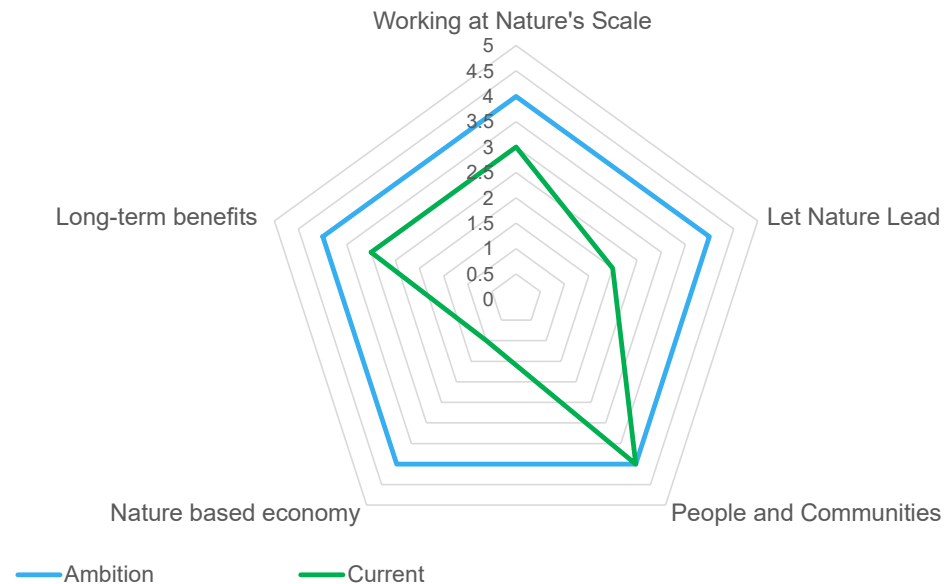
REWILDING SPECTRUM



There is no 'one size fits all' for rewilding. Nor is it about land abandonment. We promote a range of rewilding approaches through our rewilding spectrum, from managed landscapes to areas where herbivores can roam across the landscape. Each of these is important and has its place in our countryside.

There are a diverse range of approaches to rewilding, many of which include food production, artisan products, and tourism enterprises. From nature friendly farming and regenerative agriculture to core rewilding, the spectrum captures the diversity of approaches and their importance for nature recovery

People are a part of our landscapes, and must be included within rewilding principles.



Example rewilding spectrum assessment showing current levels against the five principles of rewilding and the project's ambition

WHY DO WE NEED A REWILDING NETWORK?



We are increasingly being approached for advice on rewilding. Diverse groups – landowners, farmers, business, NGOs, communities and enthusiasts - are demanding practical, evidence-based advice and guidance on rewilding at unprecedented levels.

People power is what's needed to radically shape a better future. The actions of thousands of people can help breathe new life into our depleted landscapes and ecosystems, and lock up millions of tonnes of carbon.

The pioneering, vibrant Rewilding Network will support landowners to expand, enhance and connect rewilding and nature-friendly land uses, driving best practice through practical on the ground knowledge, and promoting local action.



THE REWILDING NETWORK



Showcasing different rewilding approaches across Britain, our network map will allow users to connect with others and learn about what is happening in Britain



Map of existing Rewilding Network projects and local groups

WICKEN FEN

Rewilding the National Trust's oldest nature reserve to create England's most famous fen

AT A GLANCE			
 Location Wicken, Cambridgeshire	 Area 1,358 acres	 Start date 1999	 Scale Large
 Habitats Lowland and Wetlands (including peatlands and marsh)	 Key species Hen harrier, Otter, Golden Plover, Great Crested Owl and Ungulates	 Rewilding actions Extensive grazing and Natural regeneration	 Engaging people Volunteering, Tourism and Recreation

Wicken Fen, England – example network project

BAMFF ESTATE

An eco-estate on the edge of the Scottish Highlands, well known for its beaver project and abundant wildlife

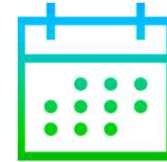
AT A GLANCE			
 Location Perthshire	 Area 1,200 acres	 Start date 2002	 Scale Medium
 Habitats Upland, Grassland, Woodland, Peatland, Wetlands (including peatlands and marsh) and Grassland and moorland	 Key species European beaver, Red deer, Otter, marten, Water vole and Long-eared owl	 Rewilding actions Extensive grazing, Tree-planting and Species reintroduction	 Engaging people Education programme

Bamff Estate, Scotland – example network project

THE REWILDING NETWORK MILESTONES



THE REWILDING NETWORK
Powered by Rewilding Britain 



300+
MEMBERS



October 2020

November 2020

Early 2021

April 2021

Mid 2021

Late 2021

2022

2023

The Rewilding Network initial launch

Online discussion platform, webinars and new rewilding content

Rewilding incubator fund established to support rewilding projects

New interactive tool to help landowners get the information they need to develop rewilding strategies

Directory of rewilding experts to provide site visits and bespoke advice.

Develop a directory of volunteers

Start to deliver a programme of dynamic site visits to share and learn.

Develop a monitoring framework and evidence base for rewilders

Dynamic and collaborative community of 300+ members rewilding more than 180,000 hectares

The rewilding network is financially self-sustaining

JOIN THE NETWORK

We would like all landowners interested in rewilding their land at any scale to connect with other, share knowledge and experiences, and provide practical guides to rewilding.

If you are interested in joining the network, you can express interest in the network [here](#)

If you have any questions, please contact Sara King, Network Lead, sara.king@rewildingbritain.org.uk

**REWILDING
BRITAIN**

